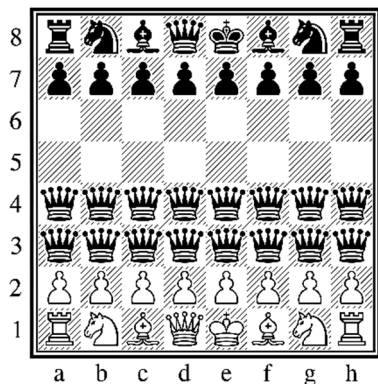


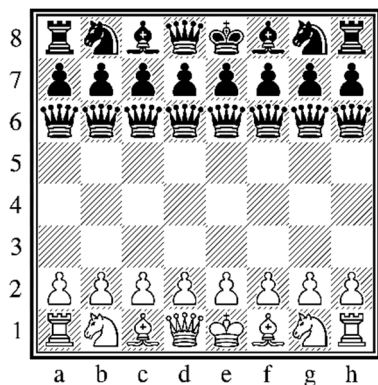
## CHOOSING OPENING BOOKS



- ♔ a3: No book
- ♔ b3: ECO A – Flank openings
- ♔ c3: ECO B – Semi Open Openings
- ♔ d3: ECO C – Open Openings
- ♔ e3: ECO D – Closed Openings
- ♔ f3: ECO E – Indian Openings
- ♔ g3: Fun Book
- ♔ h3: Varied (Default)

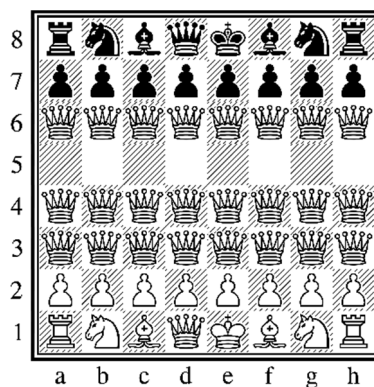
- ♔ a4: GM games ...
- ♔ b4: Performance ...
- ♔ c4: Stockfish optimized
- ♔ d4: Anand book ...
- ♔ e4: Korchnoi book ...
- ♔ f4: Larsen book
- ♔ g4: Pro book ...
- ♔ h4: GM 2001

## ENGINE SELECTION



- ♔ a6: Stockfish
- ♔ b6: Texel
- ♔ c6: Arasan
- ♔ d6: Rodent III
- ♔ e6: Zurichess neuchatel
- ♔ f6: WyldChess
- ♔ g6: Galjoen
- ♔ h6: Sayuri

## SETTING UP TIME CONTROLS



### ♔ 6<sup>th</sup> row: Move Time – Fixed Time Controls

a6: 1 sec ... b6: 3 sec ... c6: 5 sec ...  
d6: 10 sec ... e6: 15 sec ... f6: 30 sec ...  
g6: 60 sec ... h4: 90 seconds per move

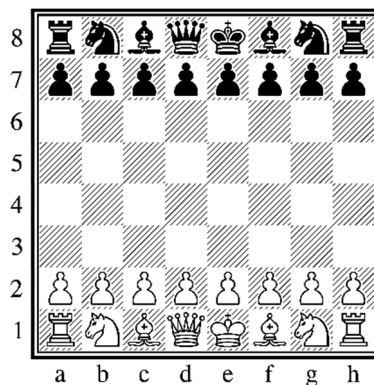
### ♔ 4<sup>th</sup> row: Game Time – Blitz Time Controls

a4: 1 min ... b4: 3 min ... c4: 5 min ...  
d4: 10 min ... e4: 15 min ... f4: 30 min ...  
g4: 60 ... h4: 90 minutes per game

### ♔ 3<sup>th</sup> row: Fischer Time (... minute game with ... sec Fischer increment)

a3: 1/1 ... b3: 3/2 ... c3: 5/3 ... d3: 10/5 ...  
e3: 15/10 ... f3: 30/15 ... g3: 60/20 ... h3: 90/30

## START A NEW GAME

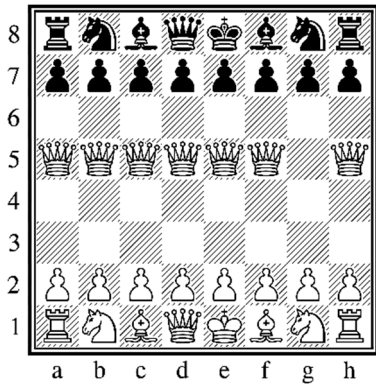


Simply place all pieces to the start position.

Adjust your options  
(e.g. time control, strength, ...)  
and start playing.

If you want to play Black,  
press the lever on the clock.

## PLAYING AND TRAINING MODES



### **a5: Game mode**

(Default mode. Play against the computer)

### **b5: Brain mode**

(Play against computer /w permanent brain)

### **c5: Analysis mode**

(PC is watching, shows best move)

### **d5: Kibitz mode**

(PC is watching, shows position score)

### **e5: Observe mode**

(PC is watching, shows remaining time)

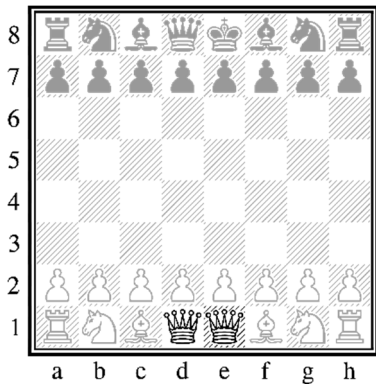
### **f5: Ponder mode**



(PC is watching, best move and position score)

### **h5: Remote mode**



(Play against someone over the internet)

## SHUTDOWN

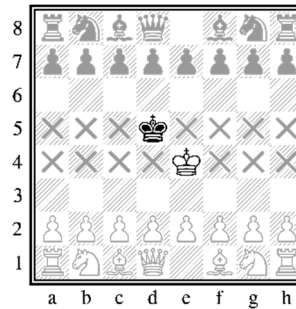


From the start position,  
replace the  with the extra .

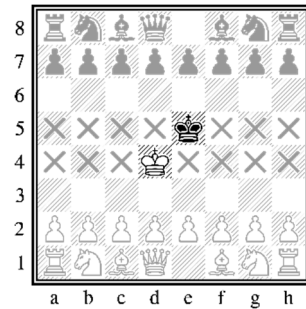
This will shut down the Raspberry.  
It takes a few seconds until the blue light turns off.

You can also do it with only the two    
on the board (on e1,d1)  
**and** all other pieces removed from the board.

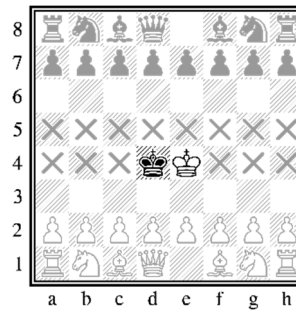
## RESIGN A GAME OR DECLARE DRAW



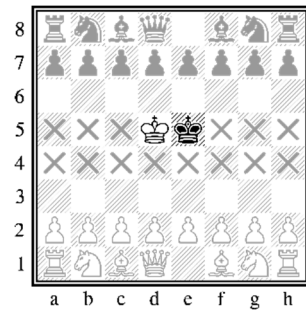
1-0 (White wins)



0-1 (Black wins)

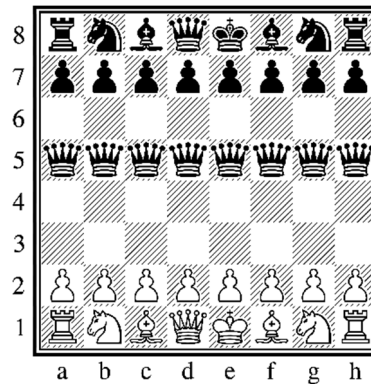


½-½ (Draw)



½-½ (Draw)

## CHOOSING SKILL LEVEL



The skill range of the currently selected engine is  
divided by 8 –  
meaning a5 (easiest level)  
towards h5 (strongest level).

Some engines support ELO level or even  
personalities instead of skill levels.

If no skill level is selected,  
PicoChess uses the highest level  
if nothing was chosen before or  
your last selected level by default.

Not all chess engines support levels!